

## Cognos Overview

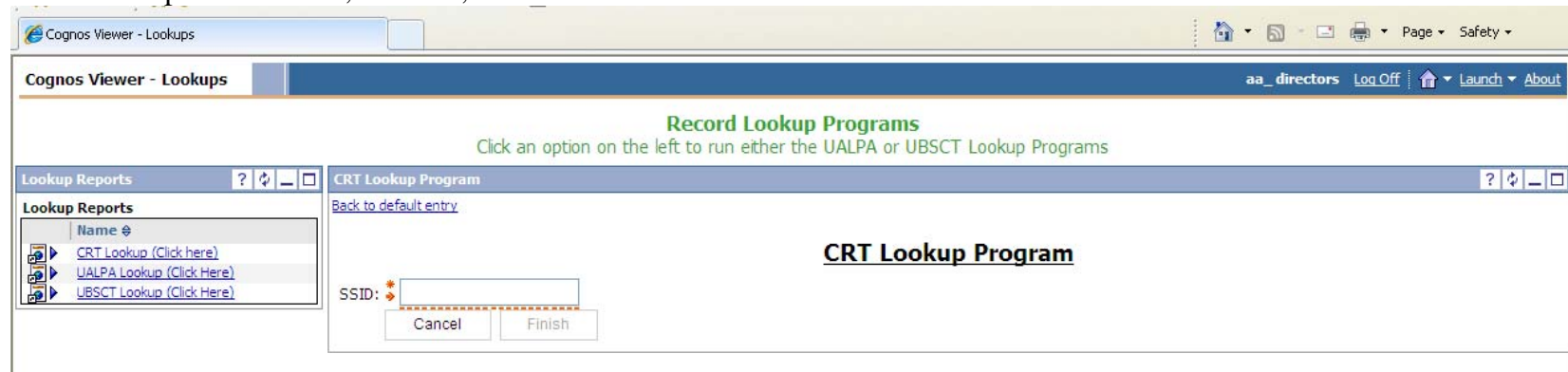
Cognos is software that can access information from one or multiple data sources, such as Excel, Access, SQL, etc, and makes data available for reporting, multidimensional analysis, ad hoc querying, dash boarding, etc. This type of software is known as Business Intelligence (BI); there are many different software packages that offer these capabilities. IBM recently purchased Cognos and their webpage is [www.ibm.com/cognos](http://www.ibm.com/cognos) Note: Cognos is not an acronym.

USOE currently offers access to Cognos for two purposes:

1. A lookup tool for CRT, UALPA, and UBSCT (User Id = \_\_\_\_\_ Password = \_\_\_\_\_)
2. An analysis tool for CRT, DWA, Iowa, UBSCT, and Enrollment data (User Id = \_\_\_\_\_ Password = \_\_\_\_\_)

To access USOE Cognos, you may use Internet Explorer or Firefox. Go to the Testing Directors webpage [http://www.schools.utah.gov/assessment/district\\_administrators.aspx](http://www.schools.utah.gov/assessment/district_administrators.aspx) and click on Cognos. You will be prompted for a User Id and Password which I will tell you and you can write in the spaces above.

1. The lookup tool for CRT, UALPA, and UBSCT results looks like this:



This lookup tool requires entry of the student SSID. This lookup tool is very handy for finding test results for students who have transferred to your school without a complete cumulative file.

2. The analysis tool for CRT, DWA, Iowa, UBSCT, and Enrollment data looks like this:

Utah State Cognos Server - Need help?? Call 801-538-7823 - Last update 08/Jan/10

**CRT Cubes**

Name
<a href="#">CRT Multi-Year Cube</a>
<a href="#">State/District Line Graph Comparisons</a>

**CRT Reports**

Name
<a href="#">CRT by Percentage and Number Proficient</a>
<a href="#">CRT Longitudinal Report</a>
<a href="#">CRT Main Report</a>

**Information**

Name
<a href="#">Click here for if you receive an error opening a cube</a>
<a href="#">Click here for problems exporting to Excel</a>
<a href="#">Click here for software requirements</a>

**DWA**

Name
<a href="#">DWA Cube</a>
<a href="#">DWA Report</a>

**Iowa**

Name
<a href="#">Iowa Cube</a>
<a href="#">State District School Iowa Report</a>

**UBSCT**

Name
<a href="#">UBSCT Cube</a>

**Enrollment**

Name	Description	Modified
<a href="#">Enrollment Multi-Year Cube</a>	Show enrollment for multiple years for districts and schools	November 20, 2009 3:28:55 PM

**Special Request Cube Reports**

Name
<a href="#">Compare all Schools</a>
<a href="#">Compare all Schools Grand</a>

Take a look at the major categories of reports available on this screen (or data dashboard). Not only are there different types of data (CRT, DWA, Iowa, UBSCT, and Enrollment), there are “cubes” and there are “reports”; these are indicated by their names and by different icons.

Cubes allow for ad hoc analysis of a pre-defined data set. It takes practice to manipulate the available data elements. A mini-manual on cubes is available on my webpage: <http://www.ames-slc.org/Faculty/Raybould.htm> and click on “Cognos”.

The remainder of this overview will examine some of the CRT “reports” available. Each of these reports first shows state wide numbers. Then you can drill down through Agency type (Districts or Charter Schools), and specific school.

**Disclaimer:** Although the Cognos cubes and reports adhere to most of U-PASS business rules, there is a level of complexity that is not attained. Therefore the numbers from these reports may not be exactly the same as the official U-PASS school report cards.

Here is a thumbnail example of the three CRT reports (all shown at the state wide level):

1. CRT by Percentage and Number Proficient

CRT by Percentage and Number Proficient - Cognos Vi...

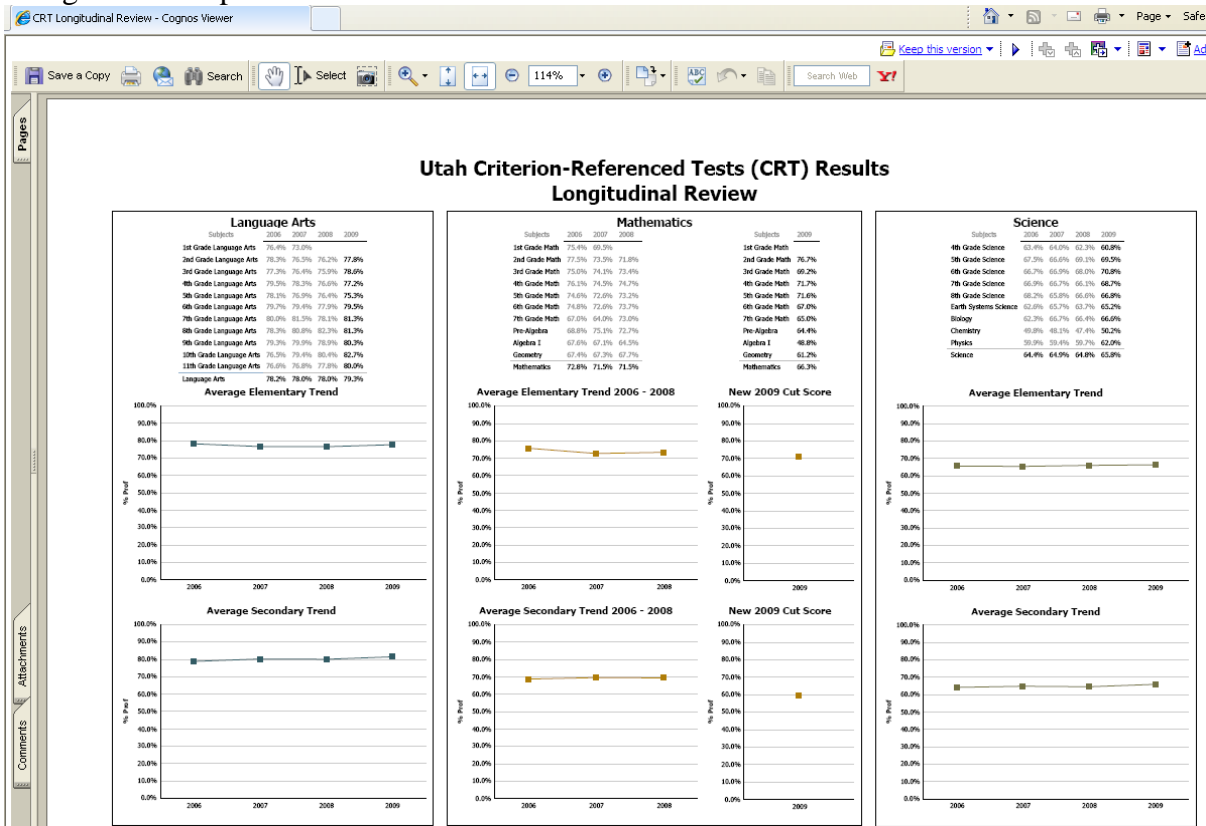
Keep this version

### 2009 CRT Results by Percentage and Number Proficient

Agency Type: [Dropdown] District Name: [Dropdown] School Name: [Dropdown]

Demographic Categories	Language Arts	Mathematics	Science	Demographic Categories	Language Arts		Mathematics		Science	
	% Prof	% Prof	% Prof		# Prof	Total	# Prof	Total	# Prof	Total
All Students	79.3%	66.3%	65.8%	All Students	325,316	410,234	236,835	357,253	203,760	309,591
Asian	80.6%	71.5%	65.6%	Asian	6,032	7,484	4,477	6,260	3,893	5,938
African American	62.1%	43.8%	41.6%	African American	3,842	6,185	2,454	5,602	1,926	4,634
Caucasian	84.1%	72.0%	72.6%	Caucasian	271,175	322,301	200,071	277,776	176,571	243,375
Hispanic	58.3%	42.9%	37.3%	Hispanic	34,667	59,507	23,339	54,412	16,622	44,514
Native American	56.4%	40.5%	36.0%	Native American	3,353	5,948	2,132	5,269	1,643	4,563
Pacific Islander	69.3%	52.2%	43.1%	Pacific Islander	4,533	6,543	3,091	5,919	2,141	4,965
Unknown	75.6%	63.1%	60.2%	Unknown	1,714	2,266	1,271	2,015	964	1,602
Female	82.8%	66.2%	64.2%	Female	165,810	200,186	115,602	174,494	96,323	149,920
Male	75.9%	66.3%	67.3%	Male	159,506	210,048	121,233	182,759	107,437	159,671
Econ Disadv	66.8%	53.7%	50.2%	Econ Disadv	94,507	141,435	69,506	129,318	52,136	103,829
Not Econ Dis	85.9%	73.4%	73.7%	Not Econ Dis	230,809	268,799	167,329	227,935	151,624	205,762
SWD	47.7%	42.7%	39.1%	SWD	25,491	53,435	20,323	47,575	15,001	38,403
Not SWD	84.0%	69.9%	69.6%	Not SWD	299,825	356,799	216,512	309,678	188,759	271,188
ELL	49.5%	40.4%	28.3%	ELL	20,153	40,689	15,513	38,401	8,067	28,464
Not ELL	82.6%	69.4%	69.6%	Not ELL	305,163	369,545	221,322	318,852	195,693	281,127
Mobile	52.5%	39.8%	36.9%	Mobile	17,002	32,410	11,635	29,226	8,780	23,792
Not Mobile	81.6%	68.7%	68.2%	Not Mobile	308,314	377,824	225,200	328,027	194,980	285,799

2. CRT Longitudinal Report



3. CRT Main Report

